



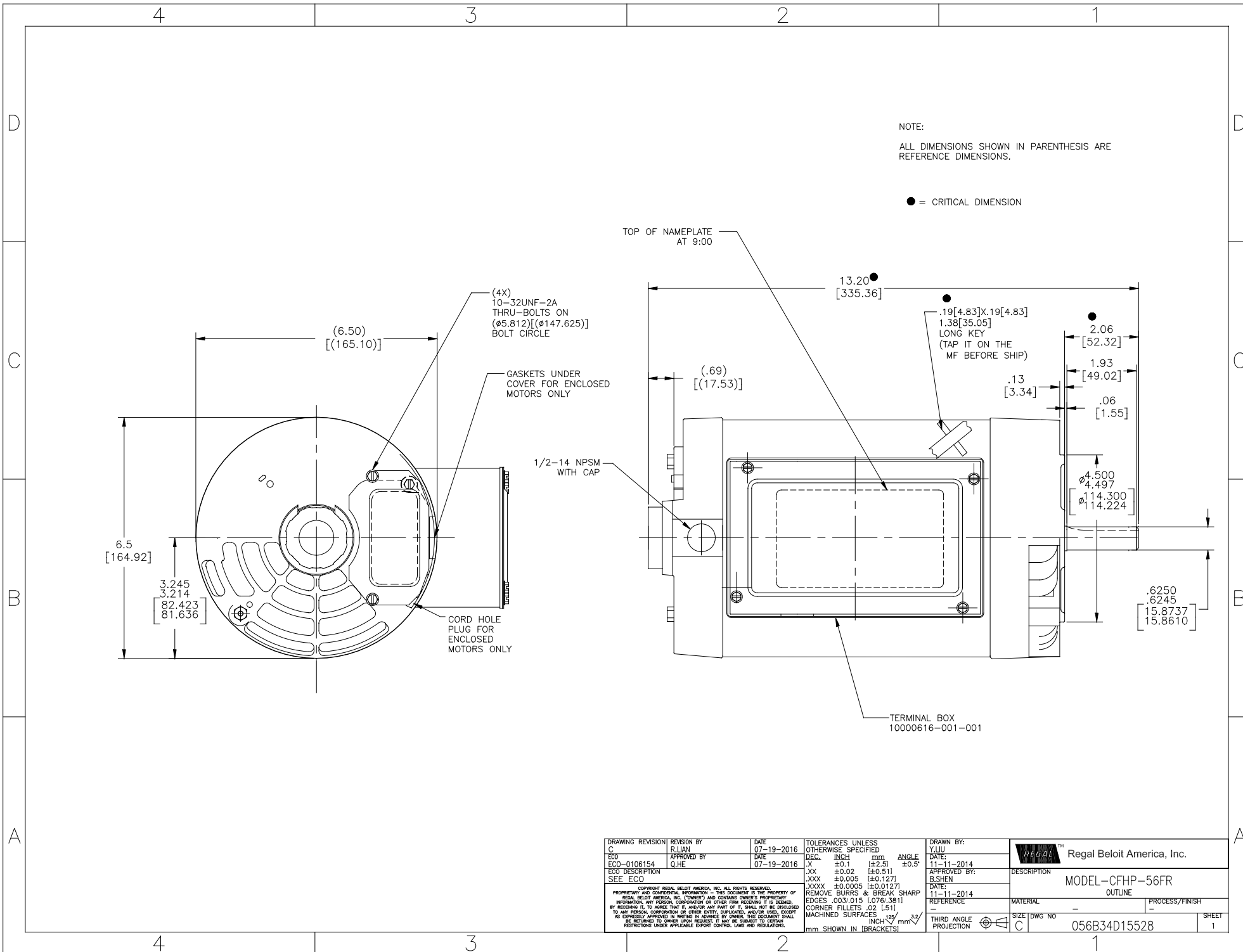
Nameplate Specifications

Output HP	2 Hp	Output KW	1.5 kW
Frequency	60 Hz	Voltage	115/230 V
Current	19.1/9.5 A	Speed	3450 rpm
Service Factor	1.15	Phase	1
Efficiency	78.5 %	Power Factor	86.5
Duty	Continuous	Insulation Class	B
Design Code	NO DESIGN CODE	KVA Code	H
Frame	56C	Enclosure	Drip Proof
Thermal Protection	Manual	Ambient Temperature	40 °C
Drive End Bearing Size	6203	Opp Drive End Bearing Size	6203
UL	Recognized	CSA	Y
CE	Y	IP Code	22

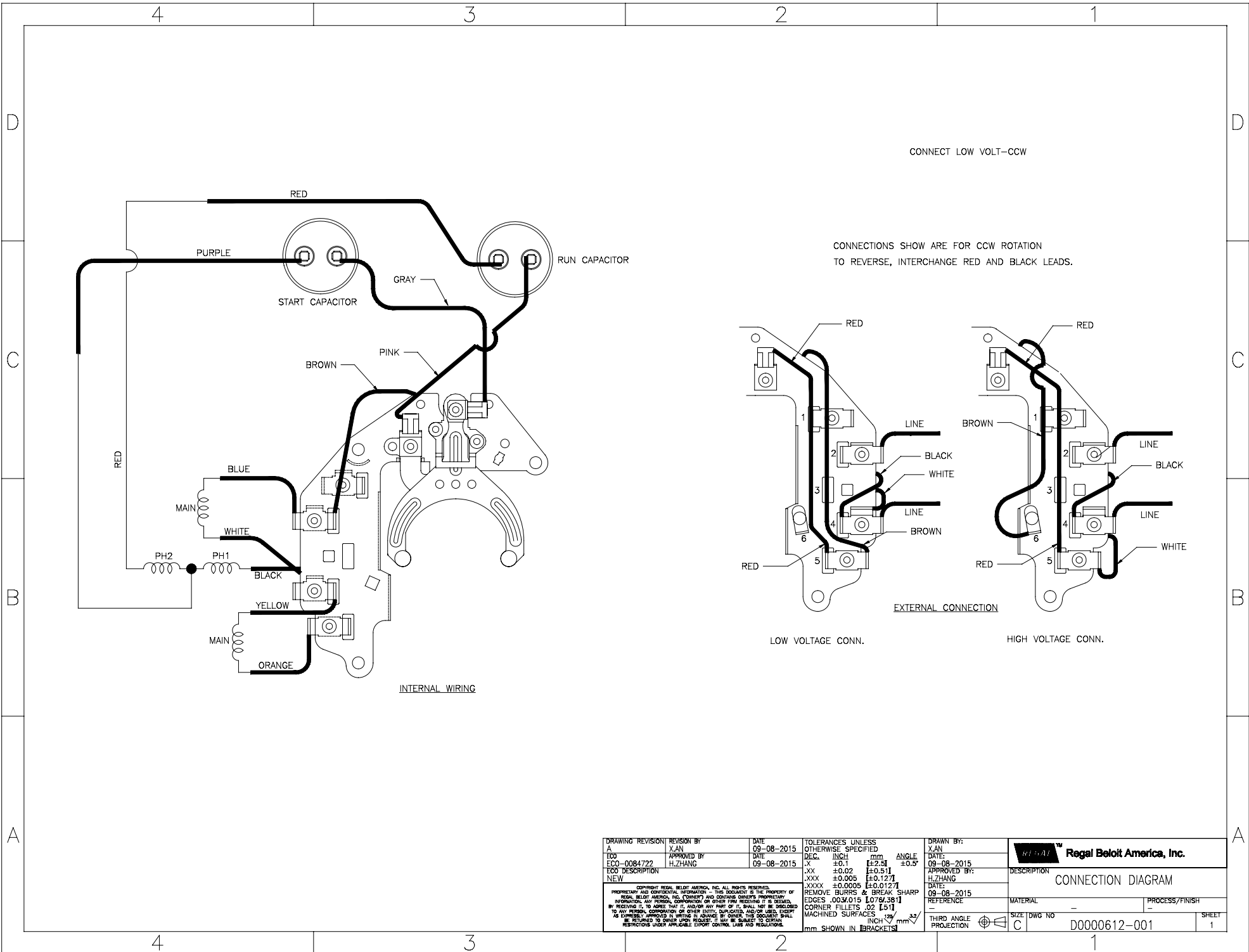
Technical Specifications

Electrical Type	Capacitor Start Capacitor Run	Starting Method	Across The Line
Poles	2	Rotation	Selective Counterclockwise
Resistance Main	0 Ohms	Mounting	Round
Motor Orientation	Horizontal	Drive End Bearing	Ball
Opp Drive End Bearing	Ball	Frame Material	Rolled Steel
Shaft Type	T	Overall Length	13.18 in
Shaft Diameter	0.625 in	Shaft Extension	1.88 in
Assembly/Box Mounting	F1 ONLY		
Outline Drawing	056B34D15528-S01	Connection Drawing	D0000612-001

This is an uncontrolled document once printed or downloaded and is subject to change without notice. Date Created:14/12/2020



DRAWING REVISION BY C ECO	REVISION BY R.LIAN	DATE 07-19-2016	TOLERANCES UNLESS OTHERWISE SPECIFIED DEC. INCH mm ANGLE X ±0.1 [±2.5] ±0.5° JXX ±0.02 [±0.51] .XXX ±0.005 [±0.127] JXXX ±0.0005 [±0.0127]	DRAWN BY: Y.LIU	Regal Beloit America, Inc.	
ECO-0106154	APPROVED BY Q.H.E.	DATE 07-19-2016	REMOVE BURRS & BREAK SHARP EDGES .003/.015 [0.076/.381]	DATE: 11-11-2014	DESCRIPTION MODEL-CFHP-56FR OUTLINE	
SEE ECO			CORNER FILLETS .02 [.51] MACHINED SURFACES INCH mm mm SHOWN IN BRACKETS	APPROVED BY: B.SHEN		
<small>COPYRIGHT REGAL BELOIT AMERICA, INC. ALL RIGHTS RESERVED. PROPRIETARY AND CONFIDENTIAL INFORMATION - THIS DOCUMENT IS THE PROPERTY OF REGAL BELOIT AMERICA, INC. ("OWNER") AND CONTAINS OWNER'S PROPRIETARY INFORMATION. ANY PERSON, CORPORATION OR OTHER FIRM RECEIVING IT IS DEMAND, BY RECEIVING IT, TO AGREE THAT IT, AND/OR ANY PART OF IT, SHALL NOT BE DISCLOSED TO ANY PERSON, CORPORATION OR OTHER ENTITY, SUPPLIER, AND/OR USER, EXCEPT AS EXPRESSLY APPROVED IN WRITING BY OWNER. THIS DOCUMENT SHALL BE RETURNED TO OWNER UPON REQUEST. IT MAY BE SUBJECT TO CERTAIN RESTRICTIONS UNDER APPLICABLE EXPORT CONTROL LAWS AND REGULATIONS.</small>				DATE: 11-11-2014	PROCESS/FINISH	
				REFERENCE	MATERIAL	
				THIRD ANGLE PROJECTION	SIZE DWG NO C 056B34D15528	SHEET 1





MARATHON ELECTRIC CORPORATION
TYPICAL PERFORMANCE CURVE for AC MOTOR

Customer

Curve at

230 Volts
60 HZ
2 HP

HP 2.00

PHASE 1

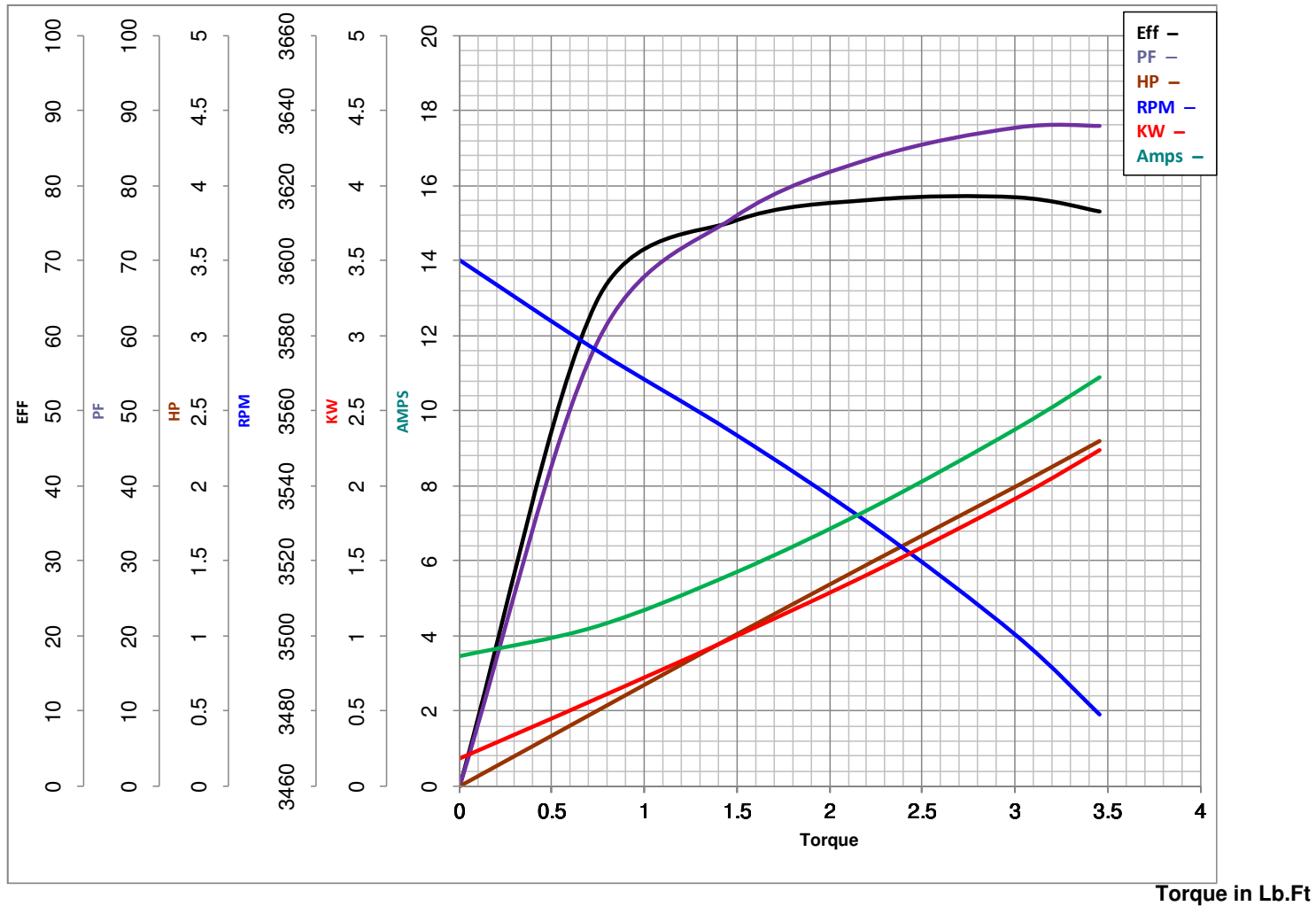
Model No 56B34D15528

VOLTS 115/230

Catalog No G272A

HZ 60

RPM 3450



FL TORQUE	<u>3.01</u>	Lb.Ft	FL AMPS	<u>19.1/9.5</u>
BD TORQUE	<u>6.2</u>	Lb.Ft	PU TORQUE	<u>5.0</u> Lb.Ft
LR TORQUE	<u>6.53</u>	Lb.Ft	LR AMPS	<u>58.5</u>
WINDING	ZB259-3		Date	1/2/2019